



# CARDINAL LANDING

7225 – Cardinal Way SW, Edmonton

FOR LEASE | ROMI SARNA

MAXWELL POLARIS - COMMERCIAL



📍 4107 99 Street Edmonton, AB T6E 3N4

☎ (780) 450-6300

✉ [romi@romisarna.ca](mailto:romi@romisarna.ca)

🌐 [www.romisarna.ca](http://www.romisarna.ca)



ROMI SARNA  
& ASSOCIATES

# Welcome to Cardinal Landing

**Romi Sarna & Associates**  
**Maxwell Polaris**

New commercial development COMING 2023 located in Chappelle serving a population over 20,000. The buildings will feature high-end marble finishing. HIGH EXPOSURE onto 41st Avenue, one of the primary corridors for South Edmonton with easy access to QE2, Anthony Henday Drive, EIA, and Nisku. Strategically located in one of Edmonton's FASTEST GROWING communities making this an excellent location for Retail / Medical / Professional / Office use. Site features high exposure pylon signage and ample on-site parking. Flexible bay sizes available.



Strategically located to serve several neighbourhoods in Heritage Valley.



20,340 households within a 5km radius.



Quick access to QE2 and Anthony Henday Drive.



Romi Sarna & Associates  
MaxWell Polaris



This document has been prepared by MaxWell Polaris for advertising and general information only. MaxWell Polaris makes no guarantees, representations or warranties of any kind, expressed or implied, regarding the information including, but not limited to, warranties of content, accuracy and reliability. Any interested party should undertake their own inquiries as to the accuracy of the information. MaxWell Polaris excludes unequivocally all inferred or implied terms, conditions and warranties arising out of this document and excludes all liability for loss and damages arising therefrom. Not intended to interfere with Clients under contract.



# Opportunity

<b>Municipal:</b>	7225 Cardinal Way SW, Edmonton, AB
<b>Legal:</b>	Plan 1820756, Block 20, Lot 1
<b>Zoning:</b>	CB1 - Low Intensity Business
<b>Neighbourhood:</b>	Chappelle
<b>Lease Rate:</b>	\$35.00 PSF
<b>Operating Costs:</b>	Approx. \$12.00 PSF
<b>Possession:</b>	Q4 2023



Romi Sarna & Associates

MaxWell Polaris



This document has been prepared by MaxWell Polaris for advertising and general information only. MaxWell Polaris makes no guarantees, representations or warranties of any kind, expressed or implied, regarding the information including, but not limited to, warranties of content, accuracy and reliability. Any interested party should undertake their own inquiries as to the accuracy of the information. MaxWell Polaris excludes unequivocally all inferred or implied terms, conditions and warranties arising out of this document and excludes all liability for loss and damages arising therefrom. Not intended to interfere with Clients under contract.





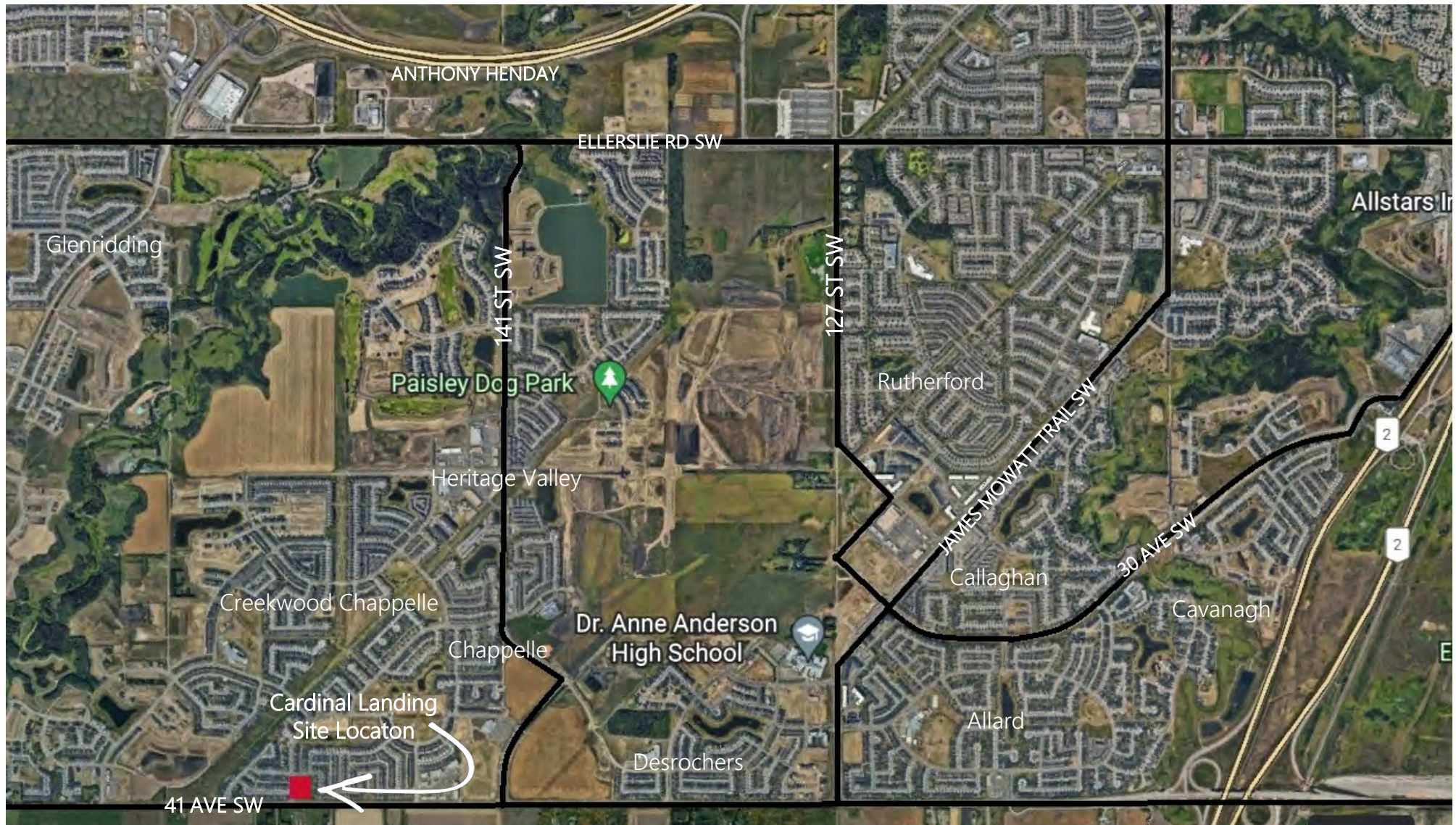
Romi Sarna & Associates

MaxWell Polaris



This document has been prepared by MaxWell Polaris for advertising and general information only. MaxWell Polaris makes no guarantees, representations or warranties of any kind, expressed or implied, regarding the information including, but not limited to, warranties of content, accuracy and reliability. Any interested party should undertake their own inquiries as to the accuracy of the information. MaxWell Polaris excludes unequivocally all inferred or implied terms, conditions and warranties arising out of this document and excludes all liability for loss and damages arising therefrom. Not intended to interfere with Clients under contract.





Romi Sarna & Associates

MaxWell Polaris



This document has been prepared by MaxWell Polaris for advertising and general information only. MaxWell Polaris makes no guarantees, representations or warranties of any kind, expressed or implied, regarding the information including, but not limited to, warranties of content, accuracy and reliability. Any interested party should undertake their own inquiries as to the accuracy of the information. MaxWell Polaris excludes unequivocally all inferred or implied terms, conditions and warranties arising out of this document and excludes all liability for loss and damages arising therefrom. Not intended to interfere with Clients under contract.



# Site Plan



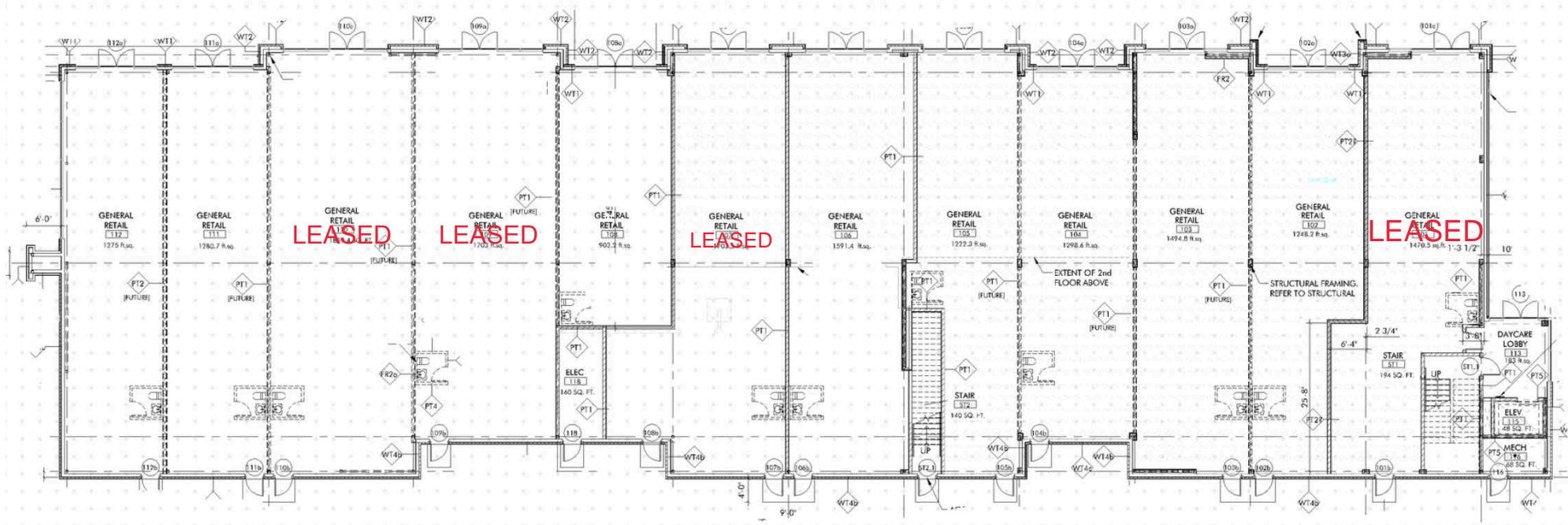
Romi Sarna & Associates

MaxWell Polaris



This document has been prepared by MaxWell Polaris for advertising and general information only. MaxWell Polaris makes no guarantees, representations or warranties of any kind, expressed or implied, regarding the information including, but not limited to, warranties of content, accuracy and reliability. Any interested party should undertake their own inquiries as to the accuracy of the information. MaxWell Polaris excludes unequivocally all inferred or implied terms, conditions and warranties arising out of this document and excludes all liability for loss and damages arising therefrom. Not intended to interfere with Clients under contract.

# Building A - Main Floor



BUILDING 'A' FIRST FLOOR AREA: 17,876 SF



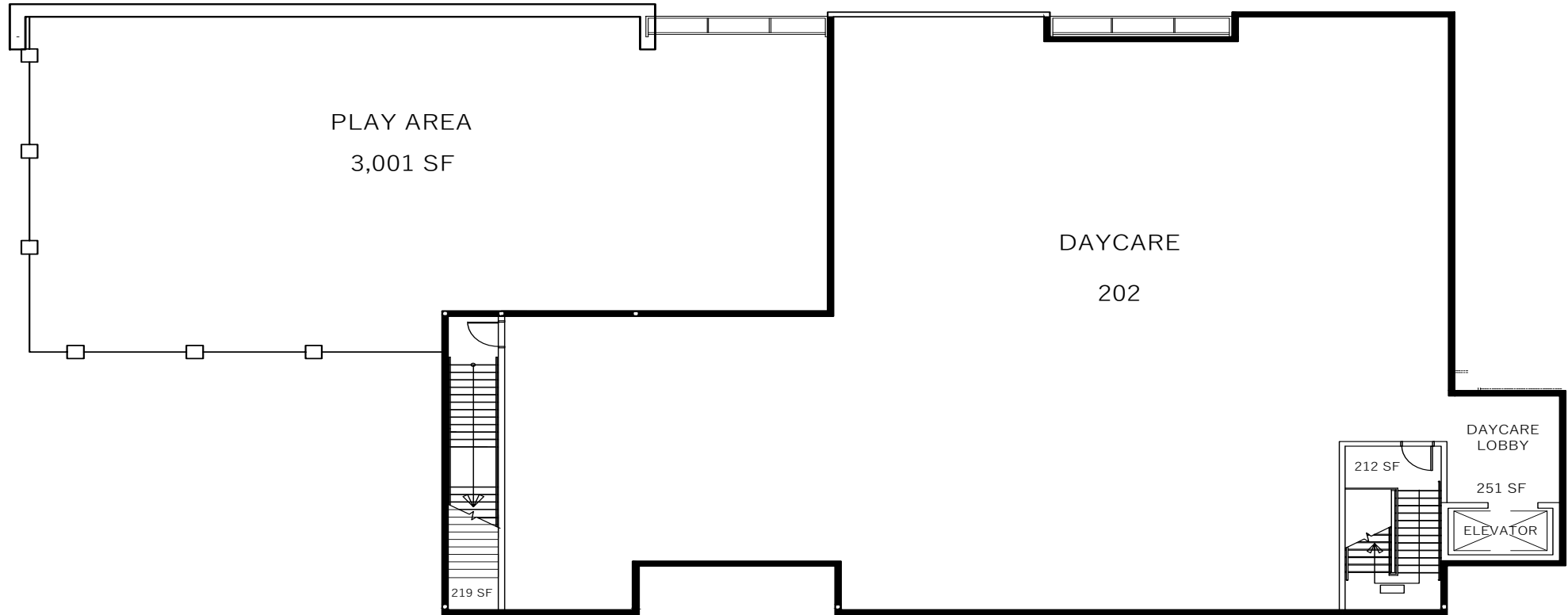
Romi Sarna & Associates

MaxWell Polaris



This document has been prepared by MaxWell Polaris for advertising and general information only. MaxWell Polaris makes no guarantees, representations or warranties of any kind, expressed or implied, regarding the information including, but not limited to, warranties of content, accuracy and reliability. Any interested party should undertake their own inquiries as to the accuracy of the information. MaxWell Polaris excludes unequivocally all inferred or implied terms, conditions and warranties arising out of this document and excludes all liability for loss and damages arising therefrom. Not intended to interfere with Clients under contract.

# Building A - Second Floor (Daycare)



BUILDING 'A' SECOND FLOOR AREA: 6,070 SF



Romi Sarna & Associates

MaxWell Polaris



This document has been prepared by MaxWell Polaris for advertising and general information only. MaxWell Polaris makes no guarantees, representations or warranties of any kind, expressed or implied, regarding the information including, but not limited to, warranties of content, accuracy and reliability. Any interested party should undertake their own inquiries as to the accuracy of the information. MaxWell Polaris excludes unequivocally all inferred or implied terms, conditions and warranties arising out of this document and excludes all liability for loss and damages arising therefrom. Not intended to interfere with Clients under contract.

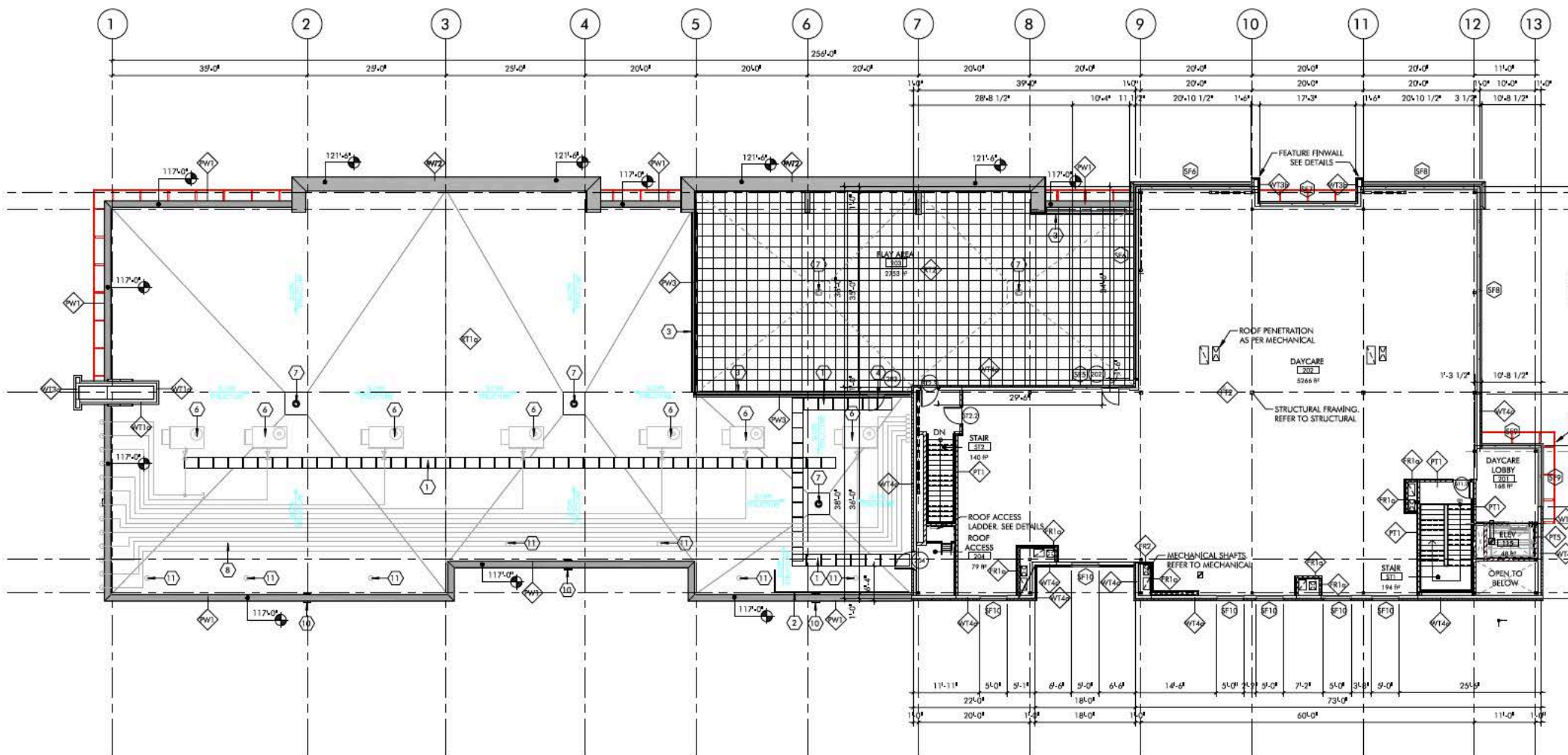




















**MaxWell**

®

Commercial

📍 4107 99 Street Edmonton, AB T6E 3N4

☎ (780) 450-6300

✉ [romi@romisarna.ca](mailto:romi@romisarna.ca)

🌐 [www.romisarna.ca](http://www.romisarna.ca)



**ROMI SARNA  
& ASSOCIATES**